

POMPA FLT61 - POT 1



Modelo S1
Xylem Water Solutions
Manufacturing AB

3171.181-1580091

274



3~50Hz 22kW

2925rpm S1

Max 40°C

Y690/Δ400V

22/38A

cosφ 0.92

TP111 CIH IEG60034-1 1P68 $\frac{\Delta}{20m}$ L

346kg

6306800

POMPA FLYGT - POZ. 2



Ultra High Swirl Jet
Water/Water Solutions
Manufacturing AB

3153.481-1580/57

2/5

3-50Hz 15kW

2910rpm SI

V90/Δ400V

16/27A

IEC60034-1 IP68 20mL

POMPA WILLO EMU - POZ. 5

Submersible sewage pump

P-TYP EMU FA08.64E
M-TYP FK17.1-4/16KEX

MFY 2015V19

U	400 -3 V	P ₂	6.60 kW	n	1415 1/min
Q	79.4 m ³ /h	H	15.1 m	σ	1.00 / 1σ 14.10 A
IN	14.10 A	IST	23.0 A	σ	1.00 / 1σ 14.10 A
AT	Stem-Dreieck	OTS	S1	OTE	S1
f	50 Hz	cos φ	0.86	Σ	20.0 mm
IP	68	t _{max}	40 °C	MC	
		IM org	258 mm	IM _{org}	251 mm

Warnung! Nicht in explosionsgefährdeten Bereichen und unter Spannung öffnen!
Warning! Do not open in explosion hazardous location and when energized!

IEC 60034-1
B2 G Ex d II B T4
BEx II 03 ATEX 1171 X
TC RU C-DE 2208 B 006602
WILLO SE Northrhessenstr. 100
44143 Dortmund Germany
Made by Willo Group in Germany

S/N: 650241148

FX  EHL CE
0158

POMPA WILO-EMU - POZ. 6

Submersible sewage pump

wilo

P-Typ EMU FA08.64E
M-Typ FK17.1-4/16KEX

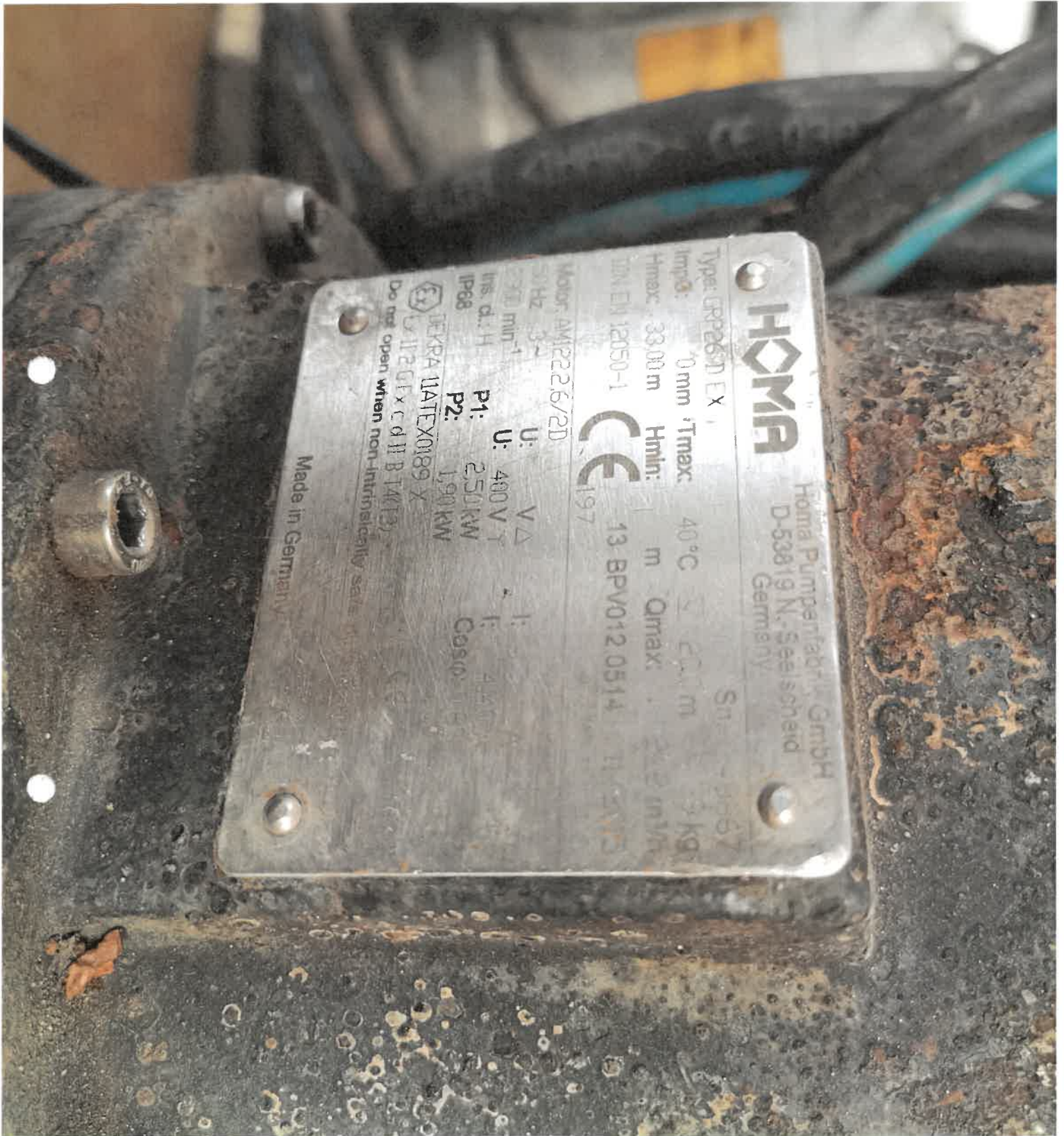
MPY 2017W/7

IP	68	T 40 °C	P ₂	6.60 kW	n	1415 1/min
Q _N	17.1 l/s		H _N	19.1 m	SE	100 l/sec 10.1 l
U	400 ~ 230 V		I _N	14.10 A	IST	23.0 A
AT	Stem-Diaseck		OT _S	S1	OT _E	S1
f	50 Hz		cosφ	0.86	Z	20.0 m
m	-		Ø g	270 mm	Ø c	265 mm

REC 6002
S/N: 65...
12 GE
1000110
1000110
1000110



POMPA HOMA GRP 26D EX - POZ. 7-8



HOMA

Homa Pumpenfabrik GmbH
D-53819 N. Seelscheid
Germany

Type: GRP26D EX

Impd: 0 mm T_{max}: 40°C

H_{max}: 33.00 m H_{min}: 1 m Q_{max}: 2.52 m³/h

Motor: AM/226/2D

CE 197

13-BPV012.0514

50 Hz 3~

U: 400 V

P1: 2.50 kW

P2: 1.90 kW

IP68

EX DEKRA IATEX0189 X

Do not open when non-intrinsically safe.

Made in Germany